



## Commercial Value Series LED HDTV

32" LED Model J32BE926

40" LED Model J40BE926

43" LED Model J43BE926

49" LED Model J49BE926

55" LED Model J55BE926



Anti-Theft  
Base



IR  
Pass-thru



Volume  
Limiter



USB Clone  
Programming



Commercial  
Interface



Eco-  
Friendly



1-Year  
Replacement



DIRECTV  
DRE  
Ready

## SPECIFICATIONS

	J32BE926 - 32" LED HDTV	J40BE926 - 40" LED HDTV	J43BE926 - 43" LED HDTV	J49BE926 - 49" LED HDTV	J55BE926 - 55" LED HDTV
Cabinet Color	brush black	brush black	brush black	brush black	brush black
Screen Size	32" diagonal	39.5" diagonal	43" diagonal	49" diagonal	54.5" diagonal
Display Resolution	1366 x 768	1366 x 768	1920 x 1080	1920 x 1080	1920 x 1080
Brightness (typical)	200 cd/m <sup>2</sup>	250 cd/m <sup>2</sup>	300 cd/m <sup>2</sup>	300 cd/m <sup>2</sup>	300 cd/m <sup>2</sup>
Viewing Angle	176° x 176°	176° x 176°	178° x 178°	178° x 178°	178° x 178°
Response Time (typical)	8 ms	8.5 ms	6.5 ms	9 ms	8 ms
Broadcast System	NTSC/ATSC/QAM	NTSC/ATSC/QAM	NTSC/ATSC/QAM	NTSC/ATSC/QAM	NTSC/ATSC/QAM
Max Audio Output	2 x 8 W	2 x 10 W	2 x 10 W	2 x 10 W	2 x 10 W
VESA Standard	200 mm x 100 mm	200 mm x 200 mm	200 mm x 200 mm	200 mm x 200 mm	200 mm x 200 mm
Power Supply	AC 100-240V 60 Hz	AC 100-240V 60 Hz	AC 100-240V 60 Hz	AC 100-240V 60 Hz	AC 100-240V 60 Hz
Power Consumption	<43 W	<70 W	<68 W	<100 W	<115 W
Standby Consumption	<1 W	<1 W	<1 W	<1 W	<1 W
TV W& Stand (WxHxD)	29.1 x 19.2 x 8.1"	36 x 23.3 x 8.8"	39.5 x 26.1 x 9.1"	43.7 x 27.5 x 10.25"	49.5 x 31.5 x 10.25"
TV w/o Stand (WxHxD)	29.1 x 17.4 x 3.5"	36 x 21.4 x 3.3"	39.5 x 22.8 x 3.8"	43.7 x 25.5 x 3.5"	49.5 x 29.5 x 3.25"
Set Weight	12.4 lbs	20.1 lbs	25.25 lbs	30.2 lbs	35 lbs
Shipping Weight	16.8 lbs	24.6 lbs	31.42 lbs	35.5 lbs	43 lbs

## COMMERCIAL FEATURES

Ultra-Slim Bezel	New thin bezel with reduced weight.
Channel Labeling	Allows channels to have individual customized names
Initial Channel	Sets the input/channel for the TV to tune when turned on
Volume Limiter/Initial Volume	Sets the minimum, maximum and initial volume settings when the TV is turned on
USB Cloning Capable	Allows duplication of TV configuration for easy installation
USB File Play	Allows guests to play MP3 and view JPG files, as well as charge mobile devices
Auto Power-Off	Allows the TV to turn off after a selectable period of inactivity
Master & Guest Remotes	Separate remotes for configuration and operation
Front Panel/Menu Lockout	Disables front panel and menu controls to make television "tamper-proof"

Power On/Off Scheduler	Sets recurring time for the TV to power on and off
Energy-Saving Features	Auto power-off, less than 1 watt in standby mode, low power LED, no signal power-off
VESA Mount Pattern	Wall-mount your TV using standard mounts
IR Pass-Thru	Allows control of an external device without the need for direct line of sight

## Accessories

User Remote (R230D1)	Included
Master Remote (R230D2)	Not Included (Optional)
Swivel Stand	Included on 32", 40", 43" & 49" models
Direct TV DRE Kit	Not Included (Optional)
Anti-Theft Security Lock Kit	Included

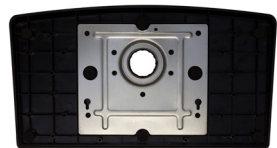
## Certifications

FCC, RoHS, cTUVus, CEC	Yes
------------------------	-----

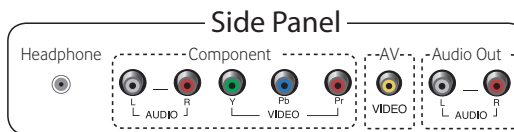
## Service/Limited Warranty

Limited Warranty	One-Year replacement, provides for minimal downtime by offering advance replacement shipping instead of on-site repair
------------------	--

Note: Features and specifications are subject to change without notice.



Anti-Theft Base



Swivel Base Design

