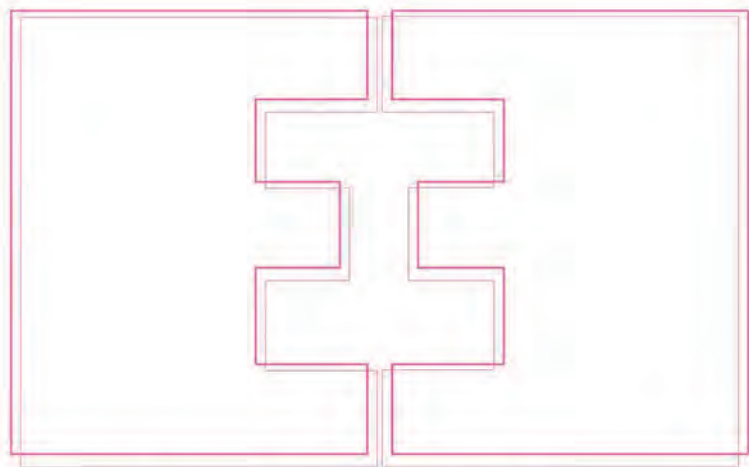


# INSPIRATION

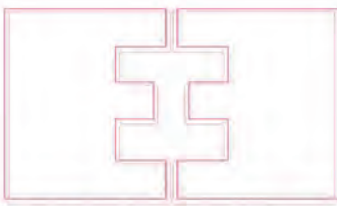
GRADE 1



EVELYN EARNEST, INC.

**BARRICADE**  
MOISTURE BARRIER





EVELYN EARNEST, INC.

P.O. BOX 425  
 EDEN, NC 27288  
 P. 336-627-0170  
 F. 336-627-0526  
 E. SAMPLES@EVELYNEARNEST.COM  
 WWW.EVELYNEARNEST.COM

## INSPIRATION TECHNICAL DATA

	CONTENT	REPEAT	WIDTH	WEIGHT	ABRASION	DESIGN
ADAIR	100% POLY	.75"V .50"H	54"	15.5 OZ LIN/YD	50,000	RAILROADED
DUGAN	100% POLY	5.5"V 7.125"H	54"	13 OZ LIN/YD	50,000	RAILROADED
GORDON	100% POLY	13"V 13.5"H	54"	15.5 OZ LIN/YD	50,000	CUTRITE
HUMMEL	100% POLY	4.625"V 2.5"H	54"	13 OZ LIN/YD	50,000	NON-DIRECTIONAL
KINLEY	100% POLY	3.5"V 3.5"H	54"	15.5 OZ LIN/YD	50,000	RAILROADED
LOWREY	100% POLY	10"V 6.75"H	54"	13 OZ LIN/YD	50,000	CUTRITE
MADDOX	100% POLY	1.6"V 1.7"H	54"	13 OZ LIN/YD	50,000	RAILROADED
SASHA	100% POLY	7"V 11.75"H	54"	13 OZ LIN/YD	50,000	RAILROADED
TATUM	100% POLY	1.875"V 1.875"H	54"	15.5 OZ LIN/YD	50,000	RAILROADED
VIENNA	100% POLY	12.5"V 6.75"H	54"	15.5 OZ LIN/YD	50,000	CUTRITE

CLEANING CODE: W

COLORFASTNESS TO CROCKING: 4

FINISH: BARRICADE

COLORFASTNESS TO LIGHT: CLASS 4

FLAMMABILITY: CAL. TB 117 SEC. E, CLASS 1

UFAC CLASS 1

Meets and exceeds ACT standards



FABRIC SAMPLES ARE READILY AVAILABLE UPON REQUEST.  
 CALL, FAX, OR ORDER SAMPLES ONLINE AT [WWW.EVELYNEARNEST.COM](http://WWW.EVELYNEARNEST.COM)

SLIGHT COLOR DIFFERENCES MAY EXIST BETWEEN PRINTED IMAGES AND ACTUAL FABRICS.



# BARRICADE™ PERFORMANCE FINISH

**Barricade™ Plus** is a permanent application that includes antimicrobial chemistry that will protect your fabrics from spills and stains. Barricade Plus also provides added protection when needed.

## CHEMISTRY

- Permanent
- Environmentally Safe
- Recyclable
- No Formaldehyde
- No PFOA
- No Impact on Inherent FR Characteristics of Fabric
- Antimicrobial - Environmentally Safe and Recyclable
- Can be Combined with Other Finishing Applications

## CLEANING INSTRUCTIONS

- Liquids
  - Blot with Dry Cloth
  - Wipe with Clean Water
- Soft and Dried Spots
  - Wipe with Water and Clean Cloth
  - Lightly Brush with Soft Bristle Brush
  - Mild Detergents can be Used for Stubborn Stains

## PERFORMANCE

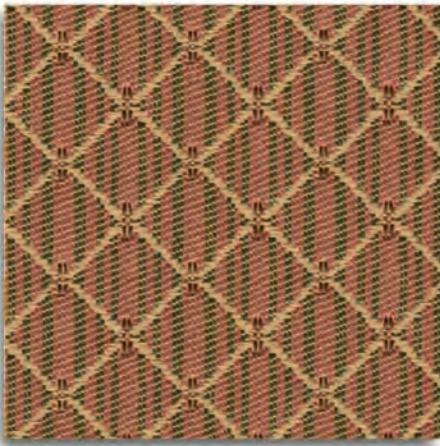
- Repels Liquids Including but Not Limited To:
  - Water
  - Coffee
  - Soda
  - Wine
  - Salad Dressing
- Breathable
- Maintains Hand

## APPLICATIONS (MARKETS)

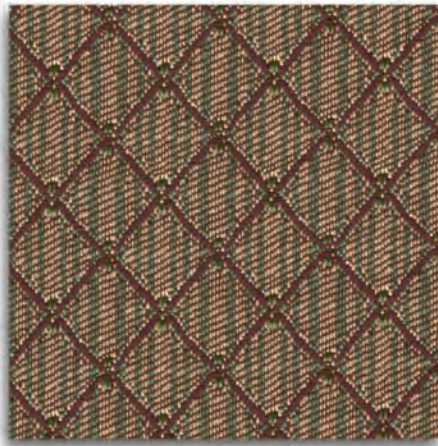
- Healthcare
- Hospitality
- Educational
- Residential







EDEN



AUTUMN



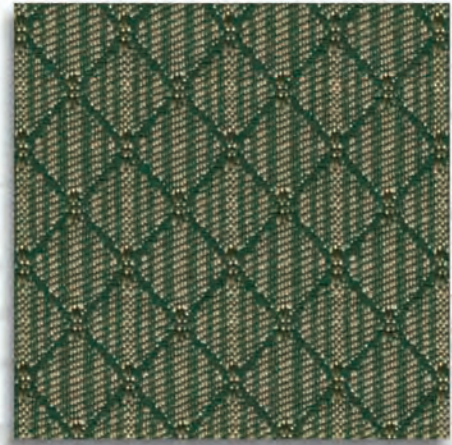
WALNUT



STRAW



BAMBOO



HUNTER

# ADAIR

CONTENT: 100% POLYESTER

WIDTH: 54"

FINISH: BARRICADE

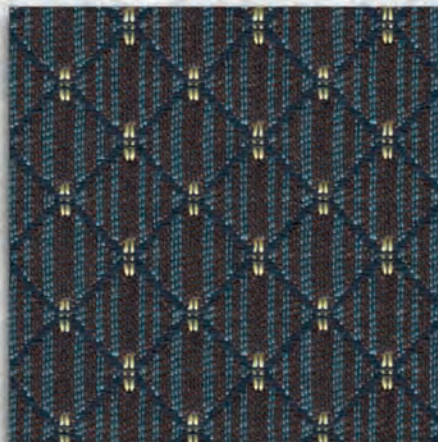
ABRASION: 50,000 DOUBLE RUBS

REPEAT: .50"H X .75"V

DIRECTION: RAILROADED



DAPPER



FATHOM



GARDEN





JAVA



BRONZE



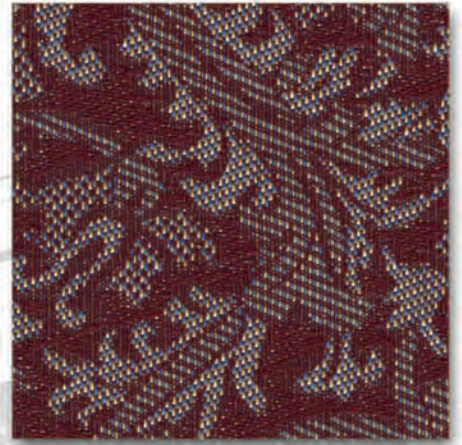
MERLOT



RAMIE



GOLDED



CALADIUM

# DUGAN

CONTENT: 100% POLYESTER

WIDTH: 54"

FINISH: BARRICADE

ABRASION: 50,000 DOUBLE RUBS

REPEAT: 7.125"H X 5.5"V

DIRECTION: RAILROADED



HARVEST



BALTIC



CHARCOAL

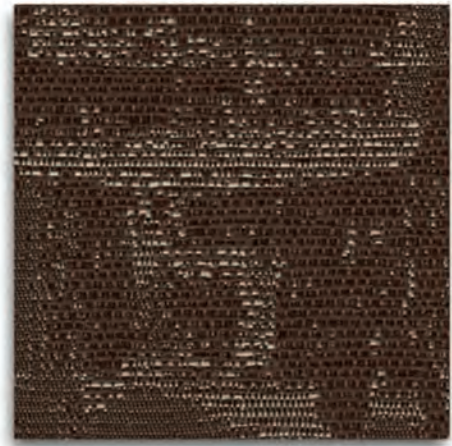




CURRY



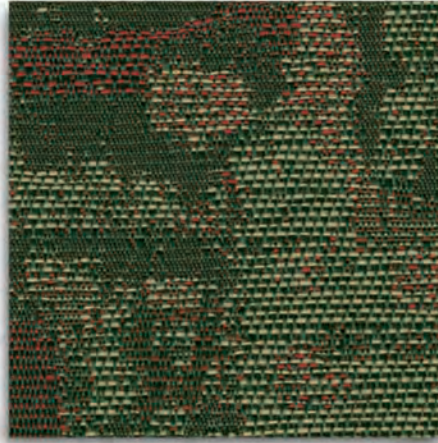
HIBISCUS



TRUFFLE



JAVA



CYPRESS



AGATE

# GORDON

CONTENT: 100% POLYESTER

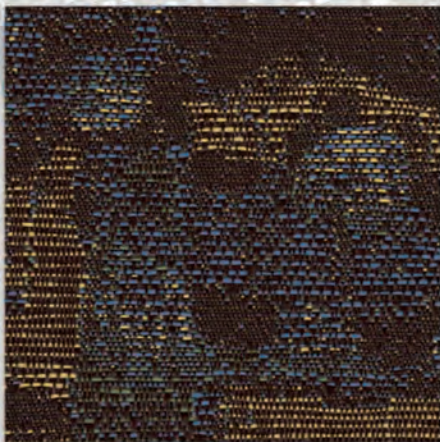
WIDTH: 54"

FINISH: BARRICADE

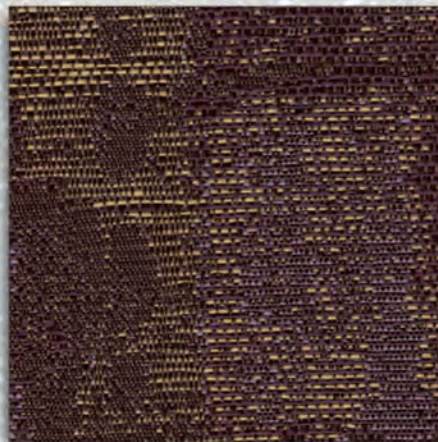
ABRASION: 50,000 DOUBLE RUBS

REPEAT: 13.5"H X 13"V

DIRECTION: CUTRITE



TEAK

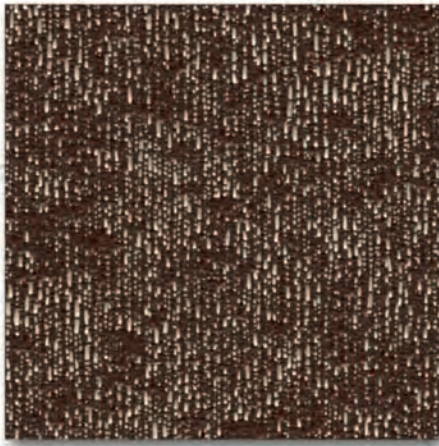


EARTH

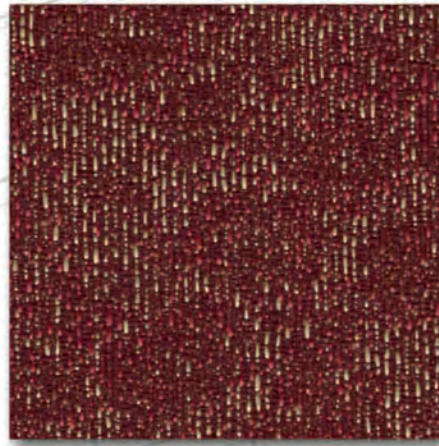


VERBENA





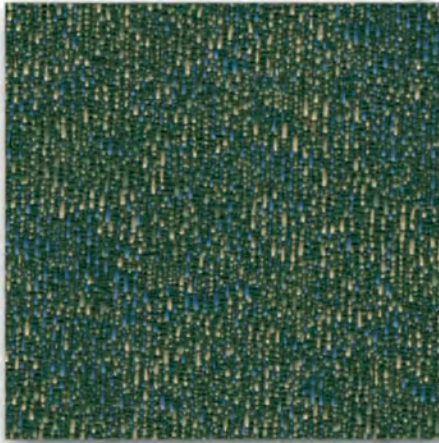
OAKWOOD



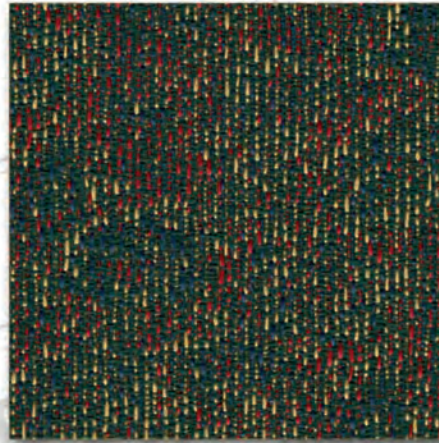
BAKED APPLE



WHEAT



JUNGLE



FIG



ALMOND

# HUMMEL

CONTENT: 100% POLYESTER

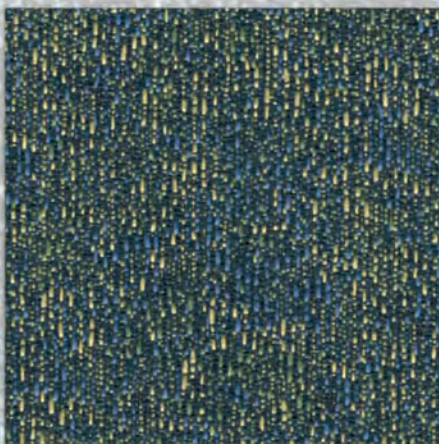
WIDTH: 54"

FINISH: BARRICADE

ABRASION: 50,000 DOUBLE RUBS

REPEAT: 2.5"H X 4.625"V

DIRECTION: NON-DIRECTIONAL



INCA

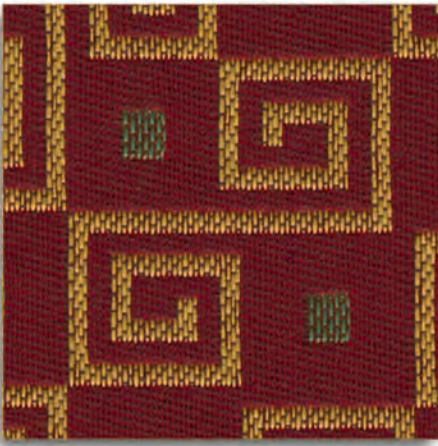


WISTERIA



GEM

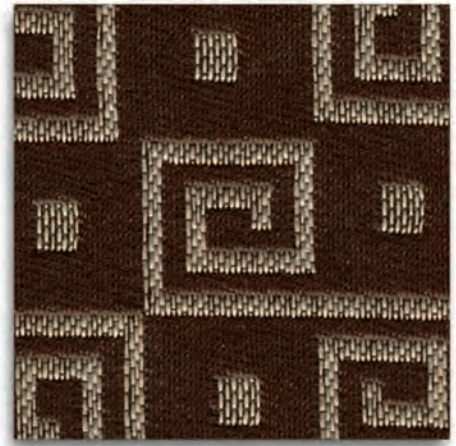




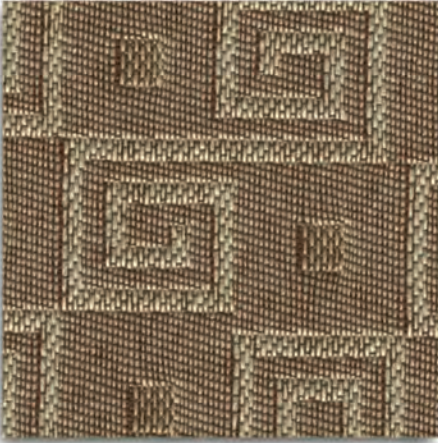
FIRECRACKER



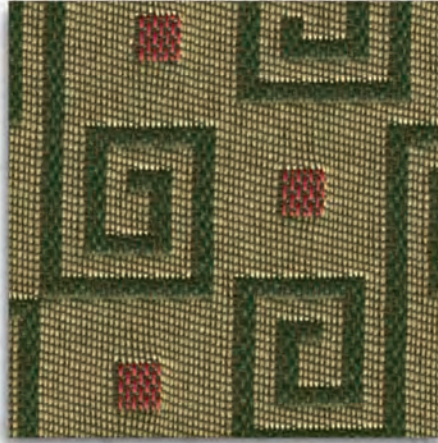
REDBUD



BROWNSTONE



TAUPE



HERBAL



OLIVE

# KINLEY

CONTENT: 100% POLYESTER

WIDTH: 54"

FINISH: BARRICADE

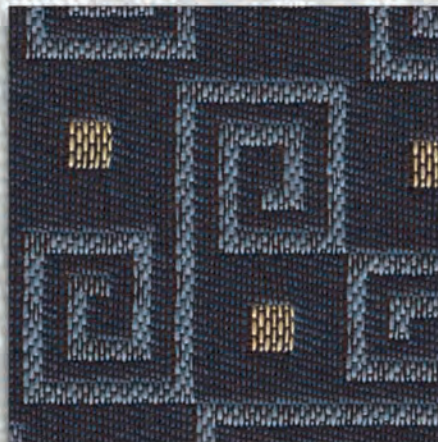
ABRASION: 50,000 DOUBLE RUBS

REPEAT: 3.5"H X 3.5"V

DIRECTION: RAILROADED



PEACOCK

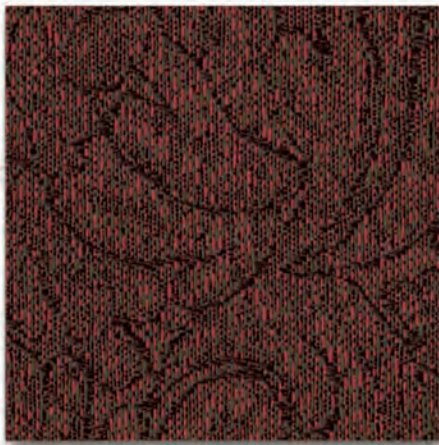


WEDGEWOOD

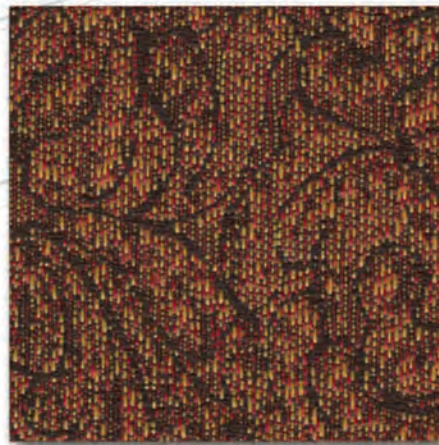


PURPLE ZEST

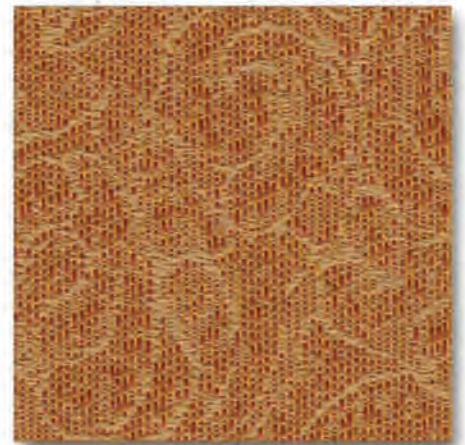




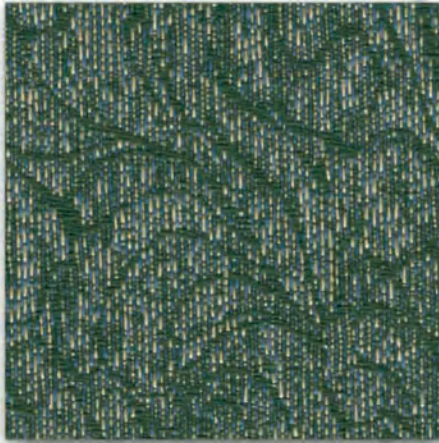
GARNET



BLAZE



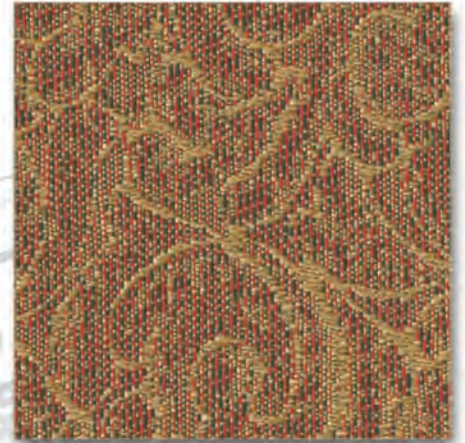
SQUASH



SEAGLASS



ALPINE



ROSEWOOD

# LOWREY

CONTENT: 100% POLYESTER

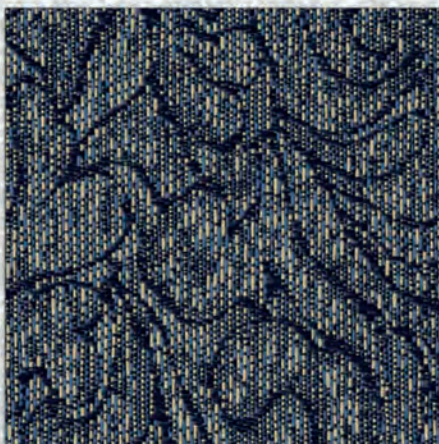
WIDTH: 54"

FINISH: BARRICADE

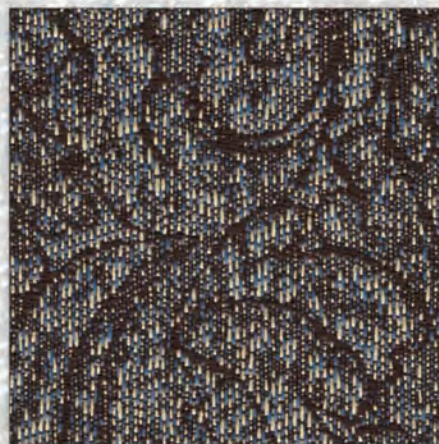
ABRASION: 50,000 DOUBLE RUBS

REPEAT: 6.75"H X 10"V

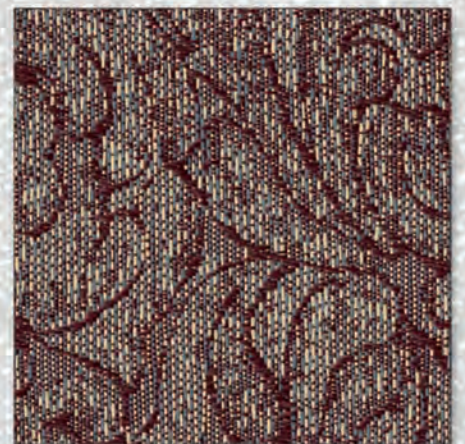
DIRECTION: CUTRITE



LAKE



PEPPERCORN



SULTON





FLAX



ISLE



SADDLE



SAND



FLANNEL



PALM

# MADDOX

CONTENT: 100% POLYESTER

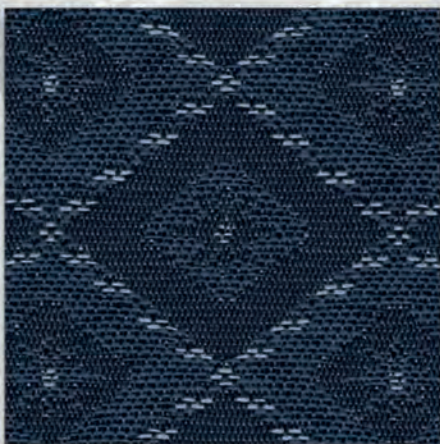
WIDTH: 54"

FINISH: BARRICADE

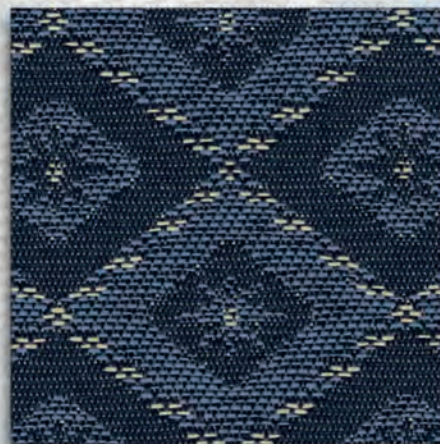
ABRASION: 50,000 DOUBLE RUBS

REPEAT: 1.7"H X 1.6"V

DIRECTION: RAILROADED



NAVY

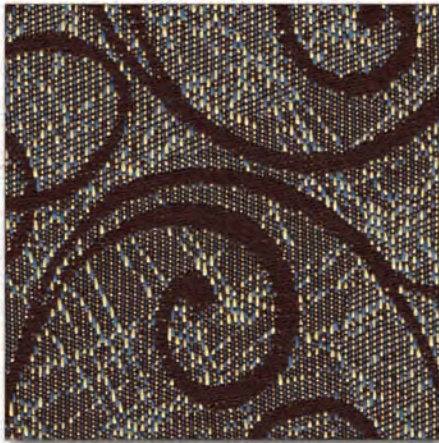


LIBRA

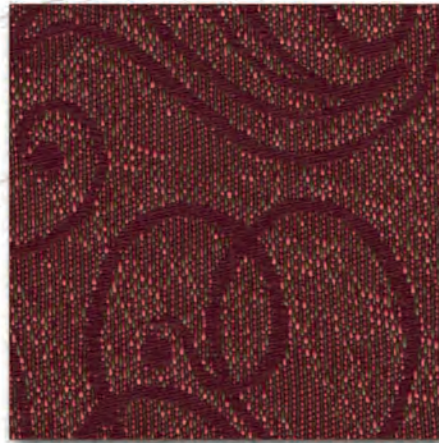


BAHAMA





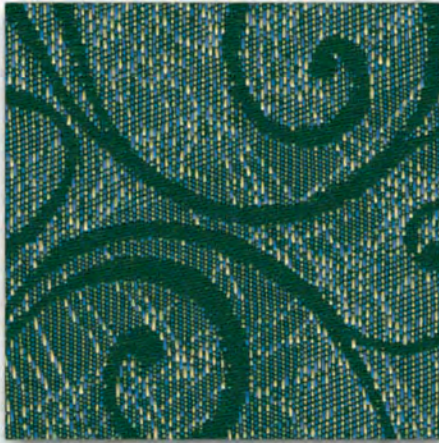
QUARTZ



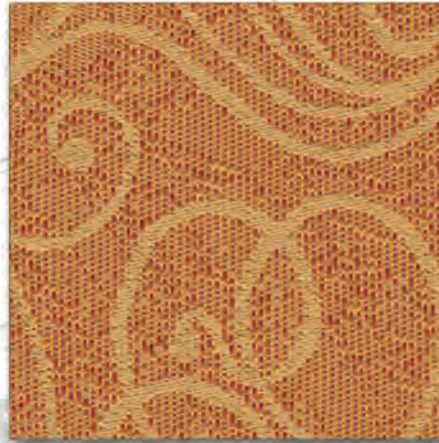
FIRENZA



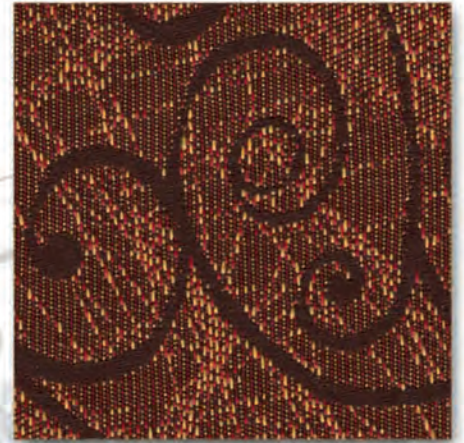
DAHLIA



JADE



CURRY



FIESTA

# SASHA

CONTENT: 100% POLYESTER

WIDTH: 54"

FINISH: BARRICADE

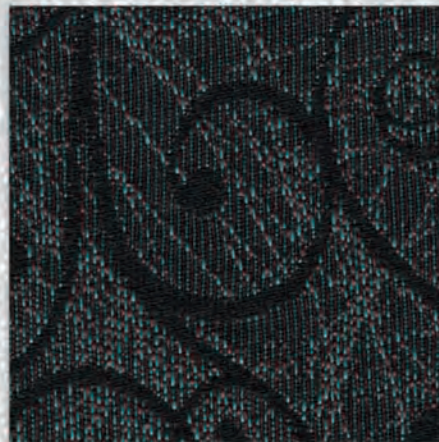
ABRASION: 50,000 DOUBLE RUBS

REPEAT: 11.75"H X 7"V

DIRECTION: RAILROADED



HARBOR



ECLIPSE



SLATE





GLOW



REDSTONE



TIMBER



RAFFIA



GLADE



FENNEL

# TATUM

CONTENT: 100% POLYESTER

WIDTH: 54"

FINISH: BARRICADE

ABRASION: 50,000 DOUBLE RUBS

REPEAT: 1.875"H X 1.875"V

DIRECTION: RAILROADED



PACIFIC

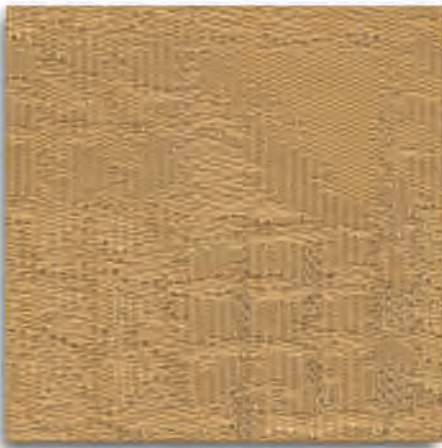


BALTIC

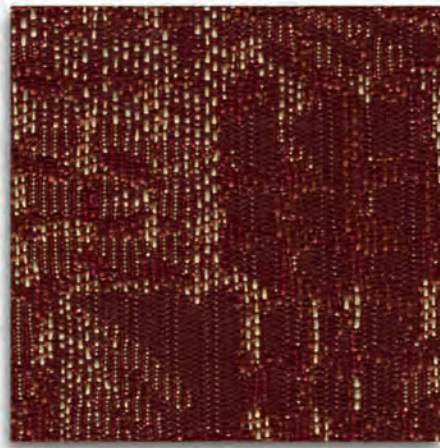


VINO





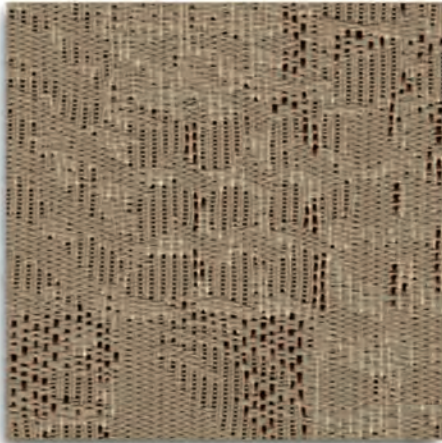
RAW SIENNA



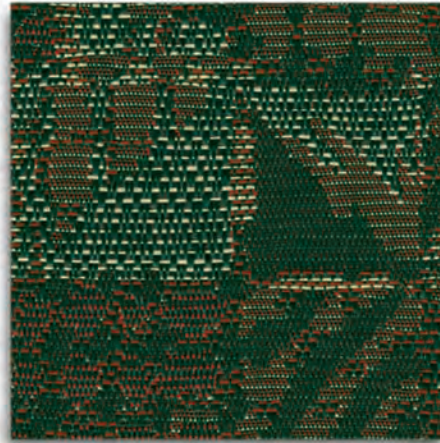
CEDAR



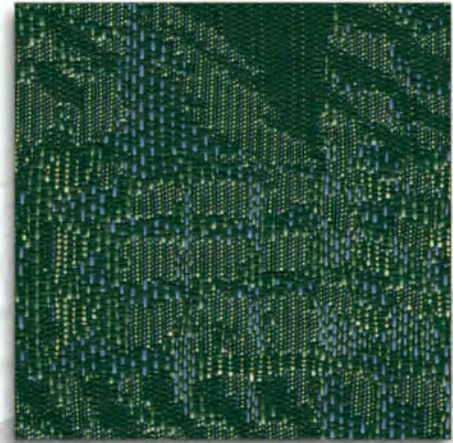
CAFE TOSTADO



LATTE



PINETOP



JUNIPER

# VIENNA

CONTENT: 100% POLYESTER

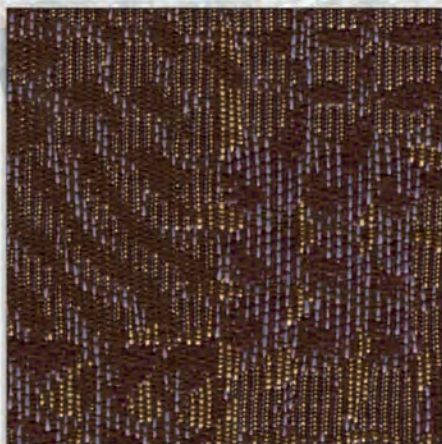
WIDTH: 54"

FINISH: BARRICADE

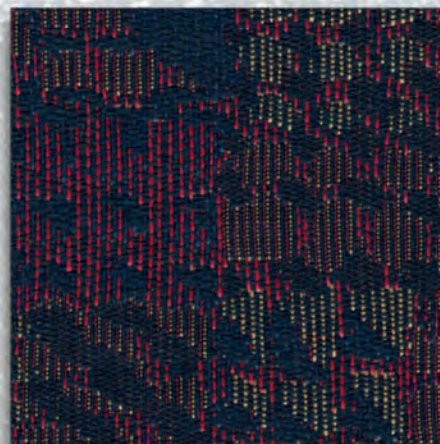
ABRASION: 50,000 DOUBLE RUBS

REPEAT: 6.75"H X 12.5"V

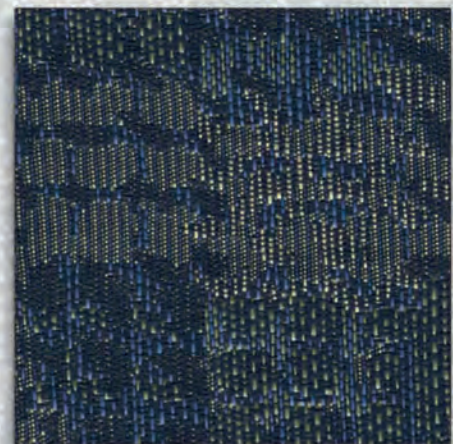
DIRECTION: CUTRITE



SUGAR PLUM



MOONSTONE



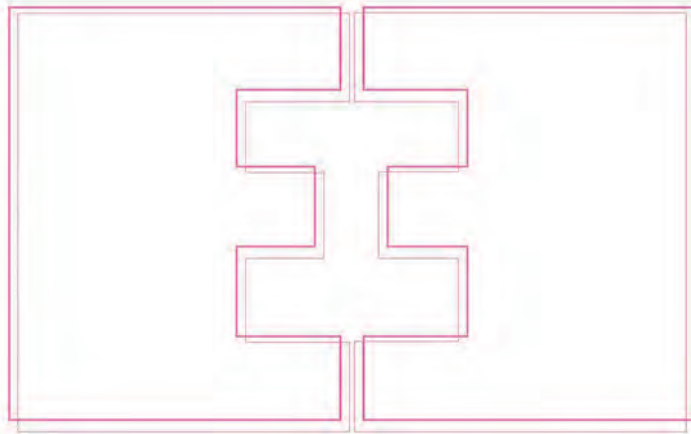
BLUEBERRY



**BARRICADE**<sup>TM</sup>  
PERFORMANCE FINISH







EVELYN EARNEST, INC.

P.O. BOX 425

EDEN, NC 27288

P. 336-627-0170

F. 336-627-0526

E. [SAMPLES@EVELYNEARNEST.COM](mailto:SAMPLES@EVELYNEARNEST.COM)

[WWW.EVELYNEARNEST.COM](http://WWW.EVELYNEARNEST.COM)

FABRIC SAMPLES ARE READILY AVAILABLE UPON REQUEST.  
CALL, FAX, OR ORDER SAMPLES ONLINE AT [WWW.EVELYNEARNEST.COM](http://WWW.EVELYNEARNEST.COM)

SLIGHT COLOR DIFFERENCES MAY EXIST BETWEEN PRINTED IMAGES AND ACTUAL FABRICS.