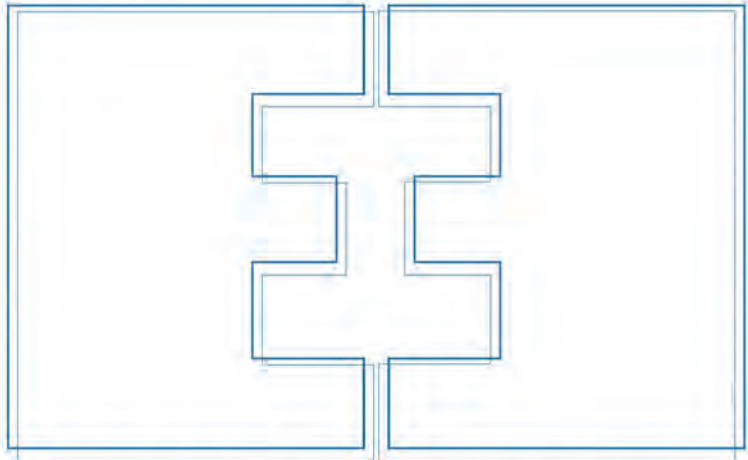
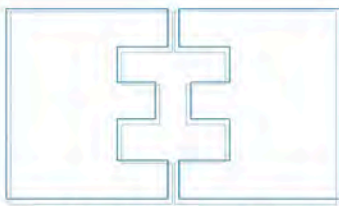


PERSUASIVE



EVELYN EARNEST, INC.



EVELYN EARNEST, INC.

P.O. BOX 425  
EDEN, NC 27288  
P. 336-627-0170  
F. 336-627-0526  
E. SAMPLES@EVELYNEARNEST.COM  
WWW.EVELYNEARNEST.COM

## PERSUASIVE TECHNICAL DATA

	BLOGGER	DECODER	MOONWALK	RALLY	SWIVEL	TRANSIT
CONTENT	38% OLEFIN 37% COTTON 25% POLY	55% COTTON 34% POLY 11% OLEFIN	75% COTTON 25% POLY	71% COTTON 23% POLY 6% OLEFIN	54% POLY 46% COTTON	63% COTTON 37% POLY
REPEAT	2.875"V 4.25"H	7"V 4.375"H	2.875"V 3.25"H	1"V 2.25"H	13.5"V 3.25"H	2"V 3.75"H
WIDTH	54"	54"	54"	54"	54"	54"
WEIGHT (LBS. PER LIN. YD)	0.90LB/YD	0.65LB/YD	0.90LB/YD	0.95LB/YD	0.70LB/YD	0.80LB/YD
ABRASION	50,000+	50,000+	50,000+	50,000+	50,000+	50,000+
DESIGN	RAILROADED	RAILROADED	CUTRITE	RAILROADED	RAILROADED	RAILROADED

CLEANING CODE: S

FINISH: CRYPTON

FLAMMABILITY: CAL. TB 117 SEC. E, CLASS 1

UFAC CLASS 1

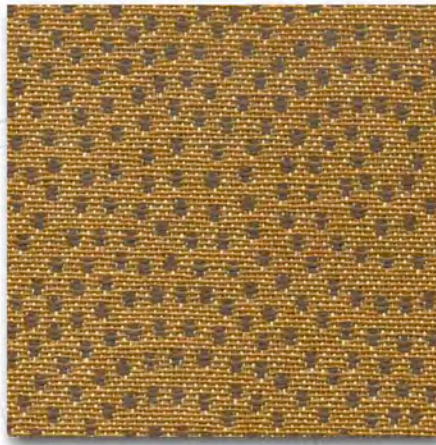


FABRIC SAMPLES ARE READILY AVAILABLE UPON REQUEST.  
CALL, FAX, OR ORDER SAMPLES ONLINE AT [WWW.EVELYNEARNEST.COM](http://WWW.EVELYNEARNEST.COM)

SLIGHT COLOR DIFFERENCES MAY EXIST BETWEEN PRINTED IMAGES AND ACTUAL FABRICS.



BLOSSOM

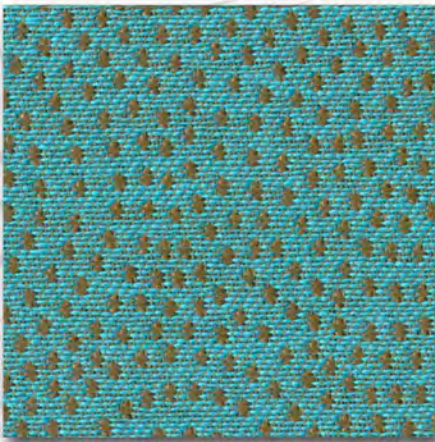


GOLD

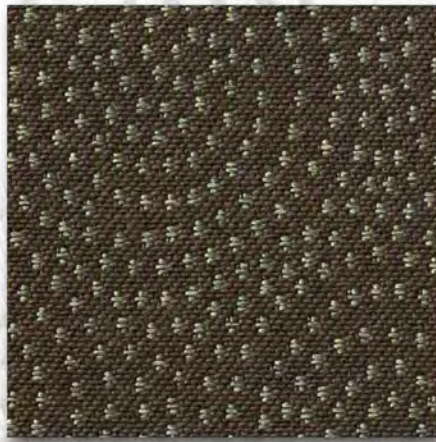


MOCHA

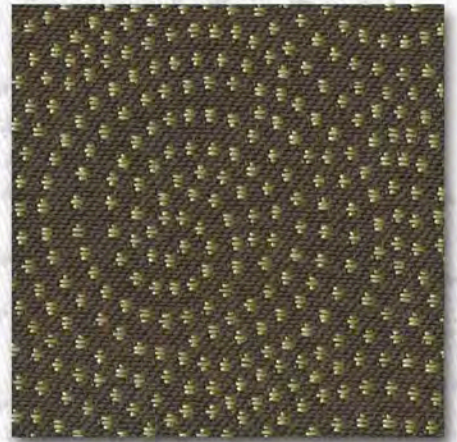
# BLOGGER



BELIZE



ESPRESSO



STONE

CONTENT: 38% OLEFIN / 37% COTTON / 25% POLYESTER

FINISH: CRYPTON

REPEAT: 2.875"V X 4.25"H

WIDTH: 54"

ABRASION: 50,000+

DIRECTION: RAILROADED



GOLD



PAPAYA



BLOSSOM



MOCHA

# DECODER

CONTENT: 55% COTTON / 34% POLYESTER  
11% OLEFIN

FINISH: CRYPTON

REPEAT: 7"V x 4.325"H

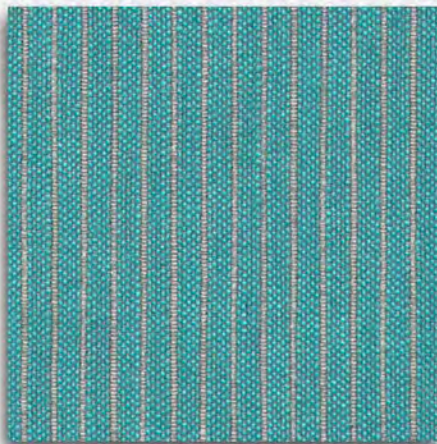
WIDTH: 54"

ABRASION: 50,000+

DIRECTION: RAILROADED



MIST



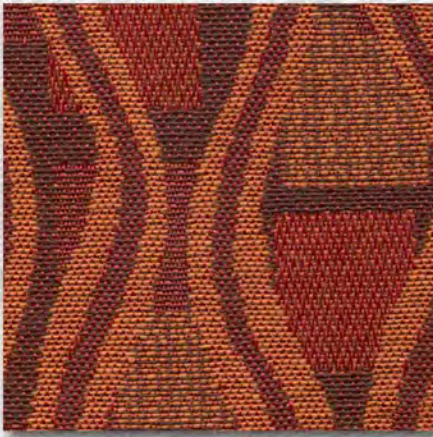
BELIZE



RAISIN



ESPRESSO



RUBY

# MOONWALK

CONTENT: 75% COTTON / 25% POLYESTER

FINISH: CRYPTON

REPEAT: 2.875"V X 3.25"H

WIDTH: 54"

ABRASION: 50,000+

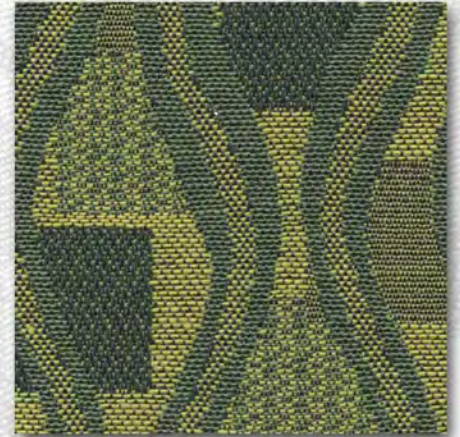
DIRECTION: CUTRITE



CLOUD



SAND



LIMELIGHT

# RALLY

CONTENT:

71% COTTON

23% POLYESTER

6% OLEFIN

FINISH: CRYPTON

REPEAT: 1"V X 2.25"H

WIDTH: 54"

ABRASION: 50,000+

DIRECTION: RAILROADED



CHICORY



SUN

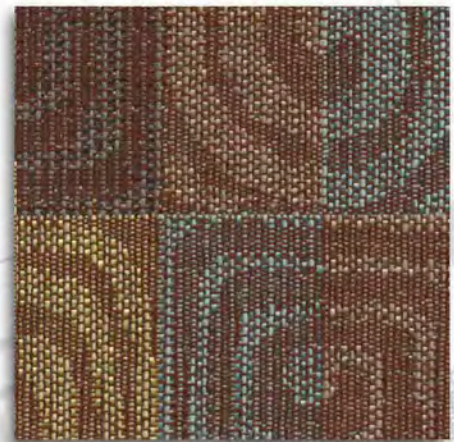
# SWIVEL



FIESTA



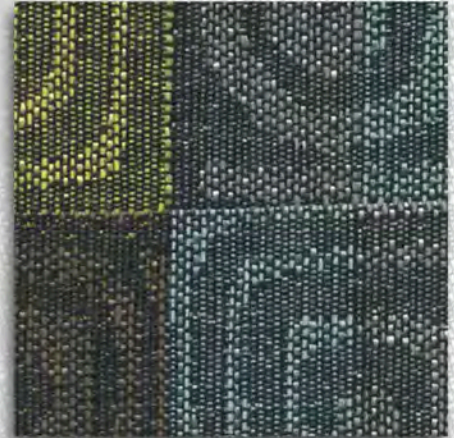
SPA



DELIGHT



ROYAL



PACIFIC

CONTENT: 54% POLYESTER / 46% COTTON

FINISH: CRYPTON

REPEAT: 13.5"V X 3.25"H

WIDTH: 54"

ABRASION: 50,000+

DIRECTION: RAILROADED



FESTIVE



POPSICLE

# TRANSIT

CONTENT: 63% COTTON / 37% POLYESTER



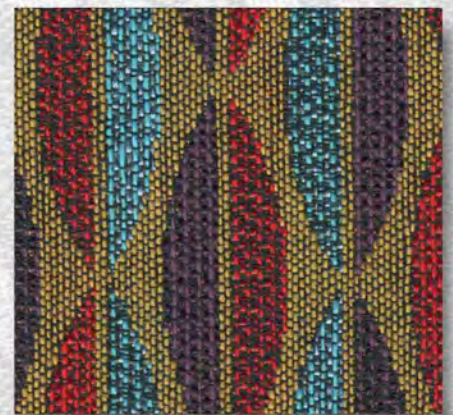
CONFETTI

FINISH: CRYPTON

REPEAT: 2"V x 3.75"H



STONE

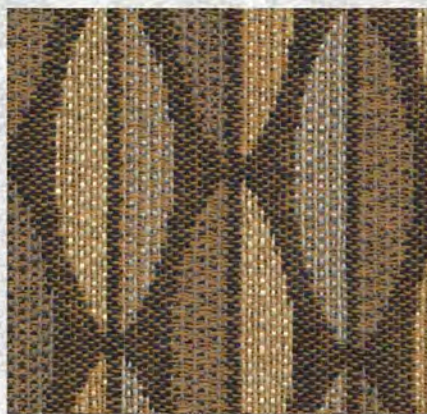


GEMSTONE

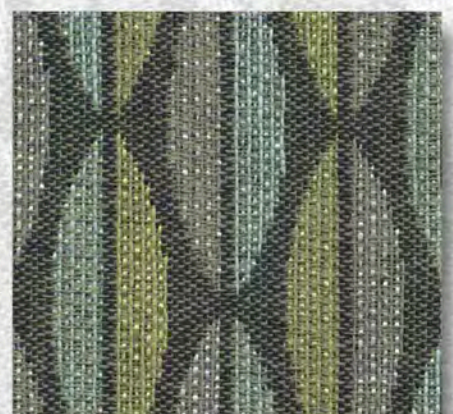
WIDTH: 54"

ABRASION: 50,000+

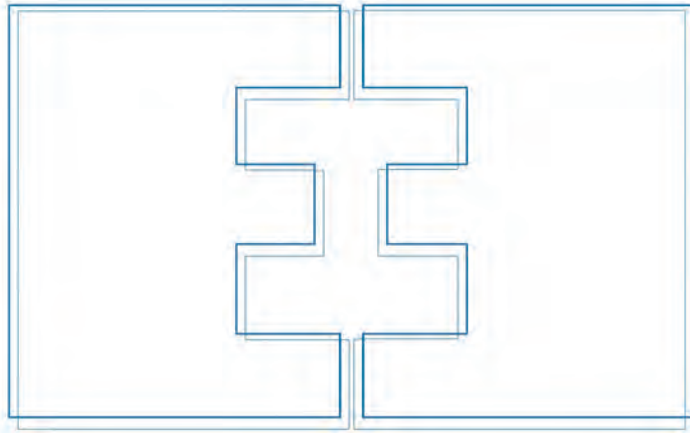
DIRECTION: RAILROADED



MOCHA



STORM



EVELYN EARNEST, INC.

P.O. BOX 425

EDEN, NC 27288

P. 336-627-0170

F. 336-627-0526

E. [SAMPLES@EVELYNEARNEST.COM](mailto:SAMPLES@EVELYNEARNEST.COM)

[WWW.EVELYNEARNEST.COM](http://WWW.EVELYNEARNEST.COM)

FABRIC SAMPLES ARE READILY AVAILABLE UPON REQUEST.  
CALL, FAX, OR ORDER SAMPLES ONLINE AT [WWW.EVELYNEARNEST.COM](http://WWW.EVELYNEARNEST.COM)

SLIGHT COLOR DIFFERENCES MAY EXIST BETWEEN PRINTED IMAGES AND ACTUAL FABRICS.