

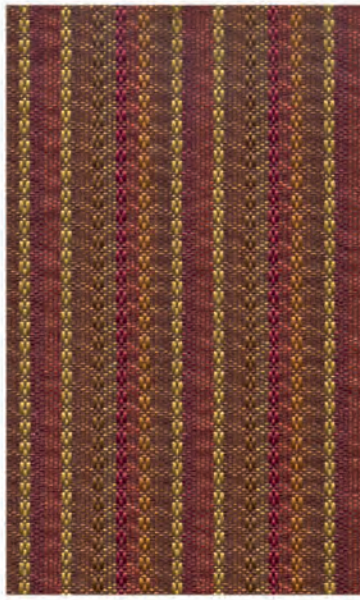
V
O
I
L
A



GRADE 1



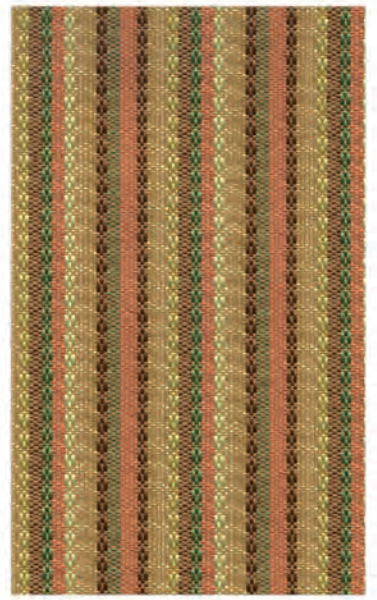
BARCODE SPICED



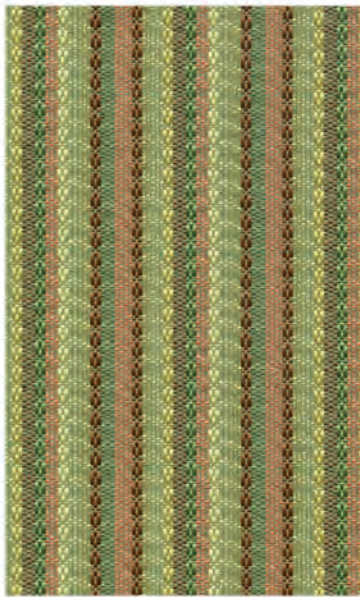
BARCODE CHIANTI



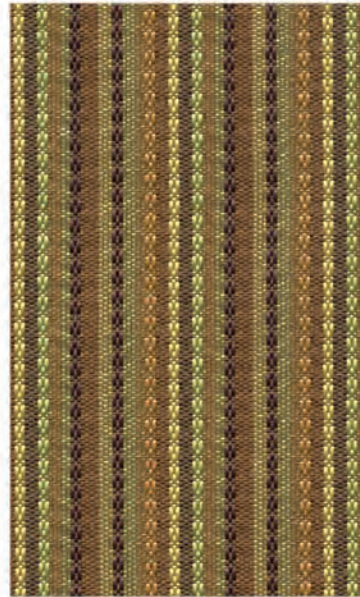
BARCODE DUNE



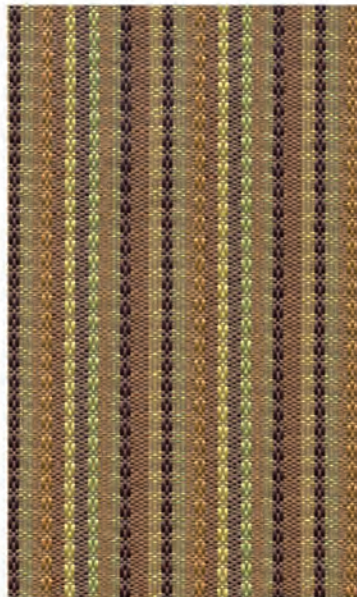
BARCODE SPRING



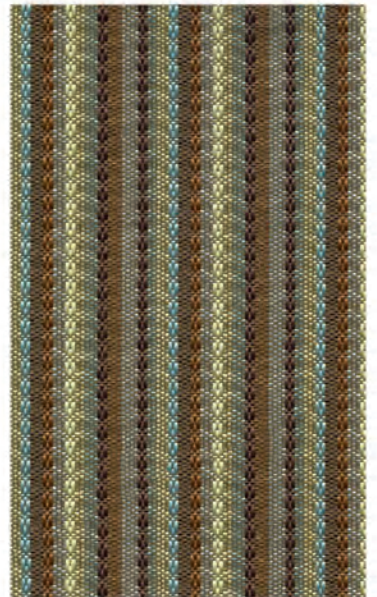
BARCODE GRASS



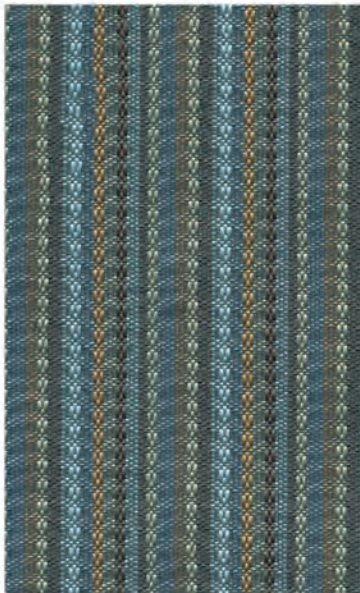
BARCODE AVOCADO



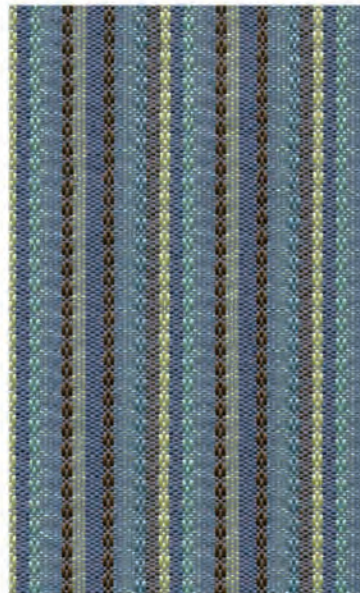
BARCODE WILLOW



BARCODE ENVY



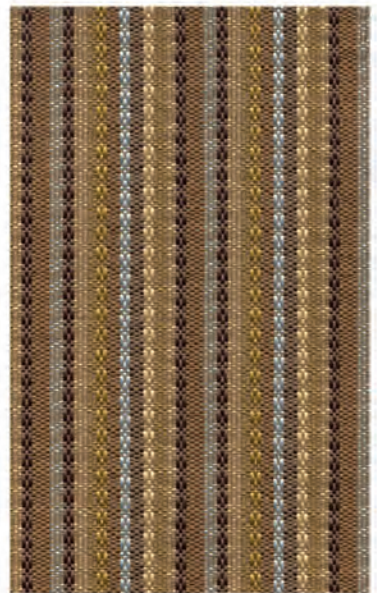
BARCODE SEABREEZE



BARCODE NAUTICA



BARCODE OFFSHORE



BARCODE MOCHAMIST



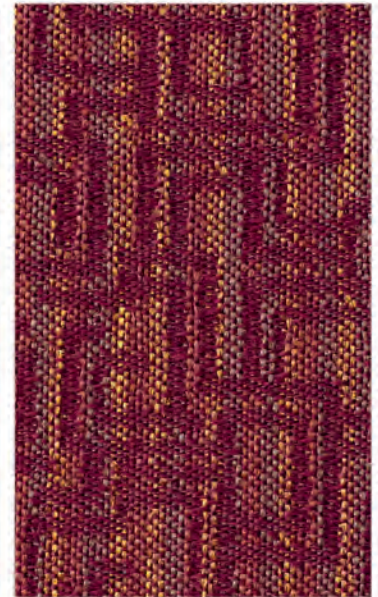
BAZAAR GRASS



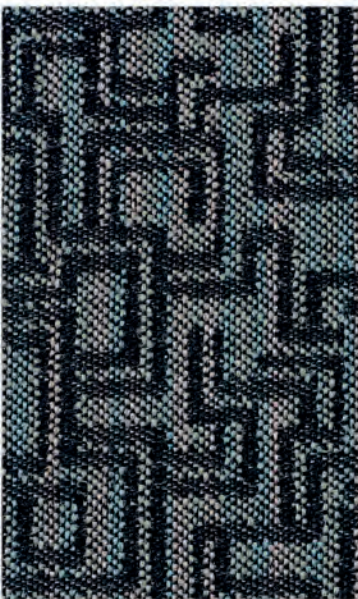
BAZAAR AVOCADO



BAZAAR SUNSET



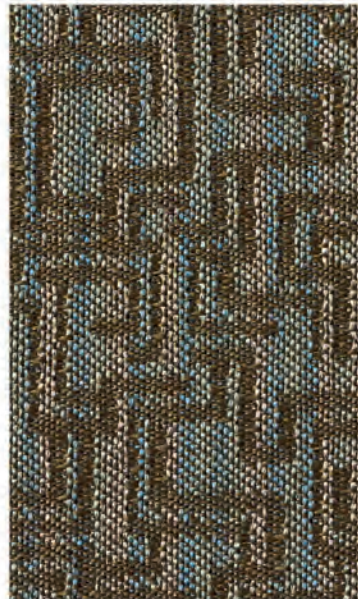
BAZAAR MERLOT



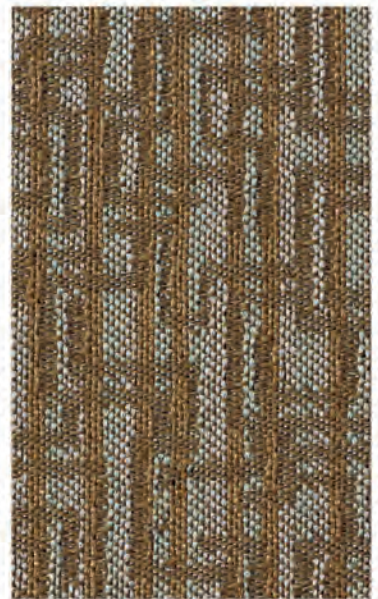
BAZAAR MINTCHIP



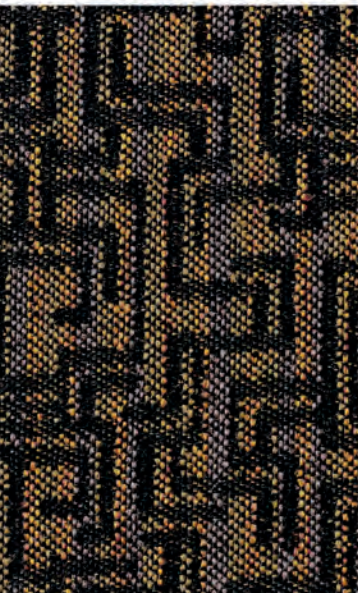
BAZAAR BREEZE



BAZAAR SEASPRAY



BAZAAR MOCHA



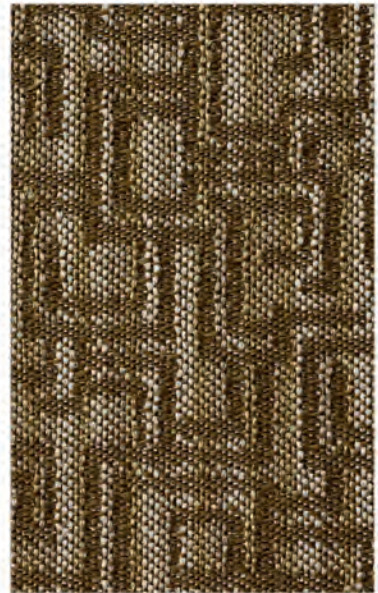
BAZAAR COPPER



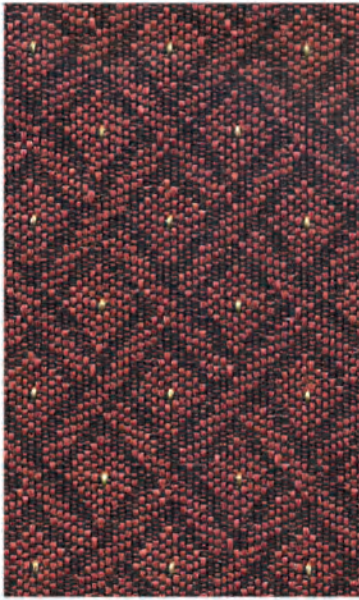
BAZAAR MOUNTAIN



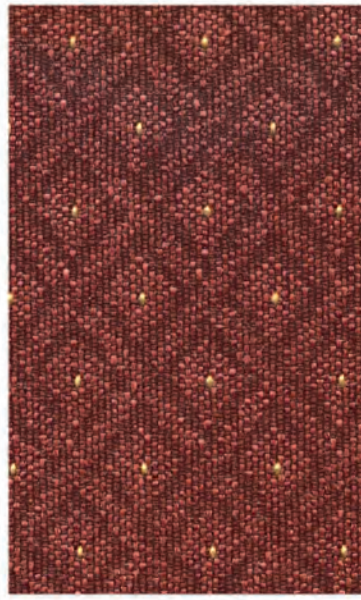
BAZAAR EARTHY



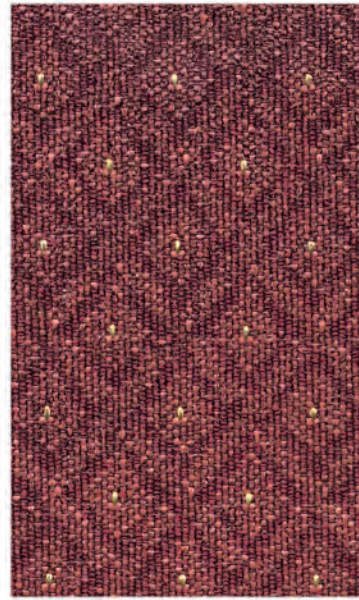
BAZAAR CAFE



BERBER AUTUMN



BERBER SPICED



BERBER RUST



BERBER SEDONA



BERBER HARVEST



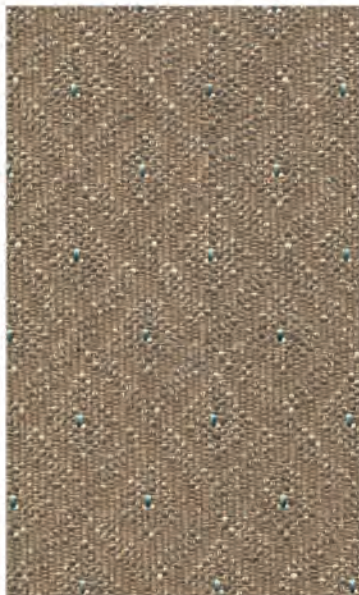
BERBER BARK



BERBER LUGGAGE



BERBER MOCHA



BERBER CAFE



BERBER BASKET



BERBER WHISPER



BERBER GRASS



INVIGORATE COPPER



INVIGORATE SUNSET



INVIGORATE TANGELO



INVIGORATE SPICED



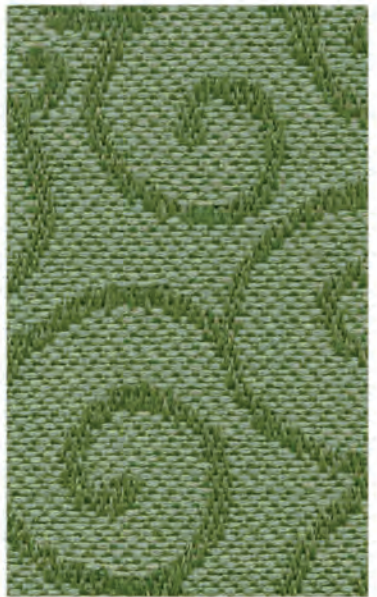
INVIGORATE SEA



INVIGORATE MOCHAMIST



INVIGORATE MOSS



INVIGORATE GRASS



INVIGORATE FUDGE



INVIGORATE ESPRESSO



INVIGORATE CAFE



INVIGORATE BAMBOO



PELHAM RUST



PELHAM CRANBERRY



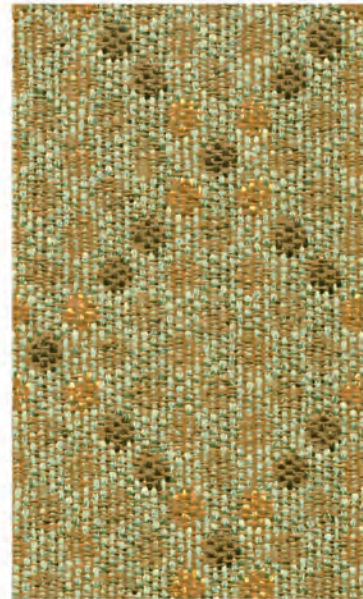
PELHAM HARVEST



PELHAM WHEATFIELD



PELHAM MIMOSA



PELHAM PISTACHIO



PELHAM GRASS



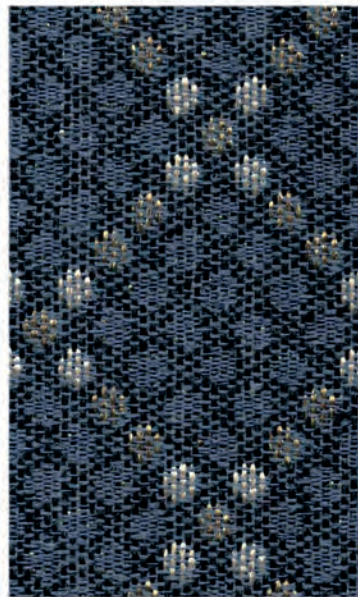
PELHAM SPRING



PELHAM MOCHA



PELHAM NIGHT



PELHAM NAUTICA



PELHAM BARK

TECHNICAL DATA

PATTERN	CONTENT	REPEAT	WIDTH	WEIGHT	DESIGN
BARCODE	100% POLYESTER	75" V .06" H	54"	.60 LB PER YARD	RAILROADED
BAZAAR	57% POLYESTER 43% OLEFIN	11" V 3.8" H	54"	.858 LB PER YARD	RAILROADED
BERBER	63% OLEFIN 37% POLYESTER	.68" V .88" H	54"	.72 LB PER YARD	RAILROADED
INVIGORATE	57% POLYESTER 43% OLEFIN	6.67" V 3.38" H	54"	.679 LB PER YARD	RAILROADED
PELHAM	69% OLEFIN 31% POLYESTER	1.88" V 2" H	54"	.70 LB PER YARD	RAILROADED

ABRASION: 30,000 DOUBLE RUBS (BARCODE, BERBER, PELHAM)
ABRASION: 50,000 DOUBLE RUBS (BAZAAR, INVIGORATE)

CLEANING CODE: S

BACKING: LAYTEX-ACRYLIC

FLAMMABILITY: CAL. 117-E/BIFMA CLASS I
UFAC CLASS I
NFPA 260 CLASS I



P.O. BOX 200
AXTON, VA 24054
P. 276-650-3356 F. 276-650-3747
TOLL FREE FAX: 800-404-9590
WWW.ACFURNITURE.COM